

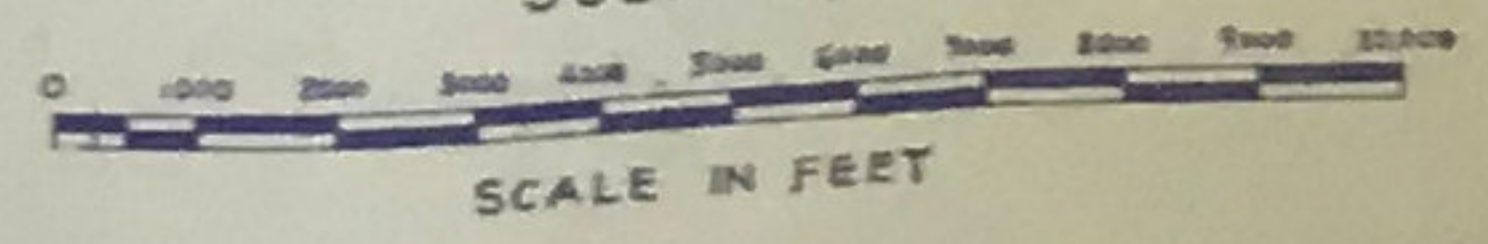


AREAS SCALED FROM THIS MAP
 HOPEWELL TOWNSHIP 60.40 Sq. Mi.
 PENNINGTON BOROUGH .95
 HOPEWELL BOROUGH .15

16A INDICATES SHEET NO.
 43 INDICATES SECTION NO.

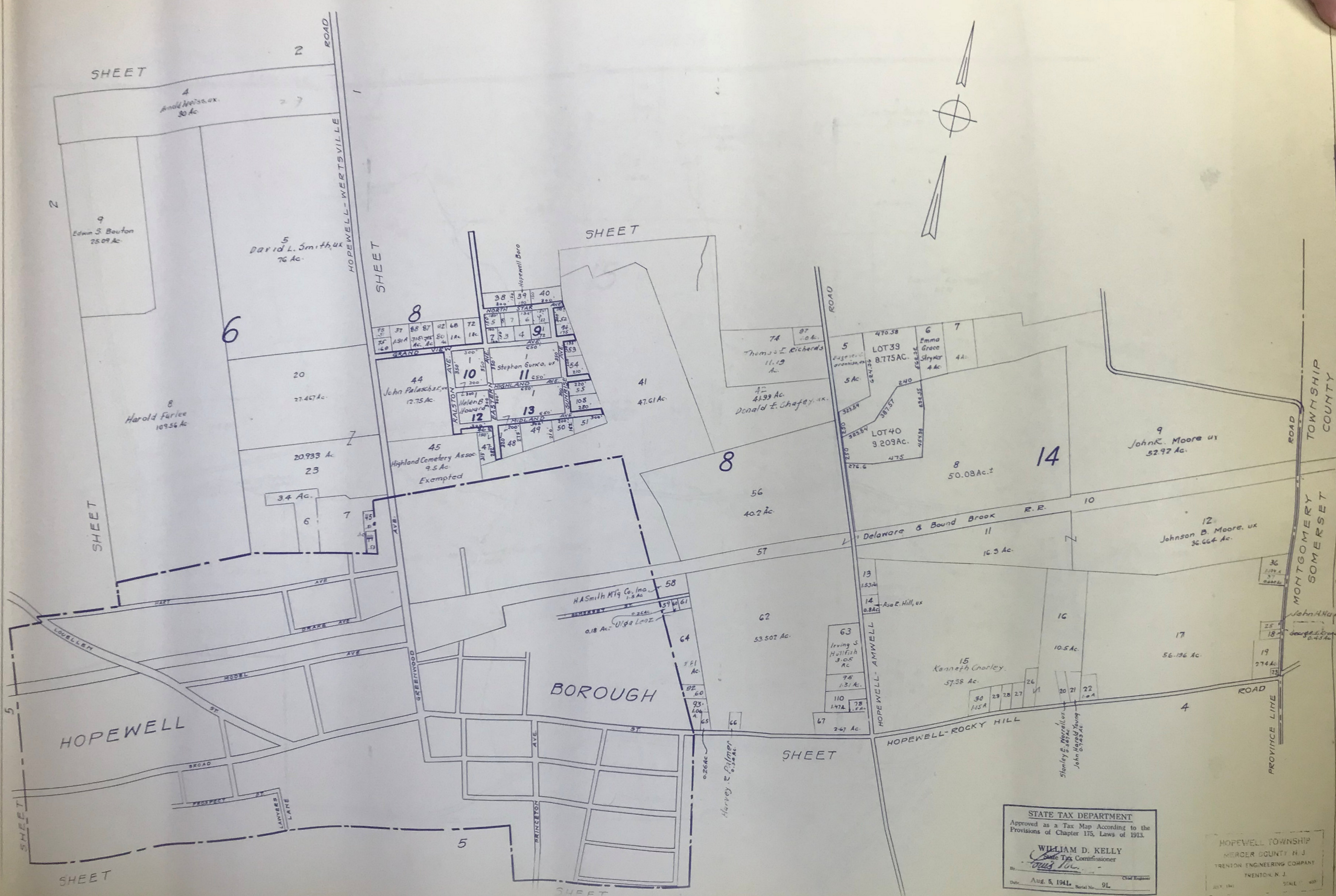
KEY MAP
HOPEWELL TOWNSHIP TAX MAPS
 MERCER COUNTY, NEW JERSEY.

PREPARED BY
 TRENTON ENGINEERING COMPANY
 TRENTON, N. J.
 JULY 1941



N. I. VAN CLEEF—TWR ENGINEER
 REVISED OCT. 1, 1968

STATE TAX DEPARTMENT
 Approved as a Tax Map According to the
 Provisions of Chapter 175, Laws of 1912
 WILLIAM D. KELLY
 State Tax Commissioner



STATE TAX DEPARTMENT
 Approved as a Tax Map According to the
 Provisions of Chapter 175, Laws of 1913.
 WILLIAM D. KELLY
 State Tax Commissioner
 By: *[Signature]*
 Date: Aug. 5, 1941. Serial No. 9L

HOPWELL TOWNSHIP
 MERCER COUNTY, N. J.
 TRENTON ENGINEERING COMPANY
 TRENTON, N. J.

SHEET 2

SHEET 1

2

6

8

14

HOPEWELL

BOROUGH

SHEET

SHEET 5

SHEET

MONTGOMERY COUNTY SOMERSET TOWNSHIP

HOPEWELL-WERTSVILLE ROAD

ROAD

PROVINCE LINE ROAD

HOPEWELL-ROCKY HILL

HOPEWELL-AMWELL

GREENWOOD

BRISTOL

Harvey E. Palmer

Stanley E. Marrellon
John Harold Young

4
Arnold Weiss, ex.
30 Ac.

9
Edwin S. Bouton
25.09 Ac.

5
David L. Smith, ux
76 Ac.

8
Harold Farlee
109.56 Ac.

20
27.47 Ac.

23
20.933 Ac.

34 Ac.

44
John Palachuk, ux
12.75 Ac.

10
Helen B. Howard

12

13

49

51

45
Highland Cemetery Assoc.
9.5 Ac.
Exempted

41
47.61 Ac.

42
4.139 Ac.
Donald F. Chafey, ux.

56
40.2 Ac.

62
53.502 Ac.

63
Irving S. Hullfish
3.05 Ac.

67
2.47 Ac.

58
H.A. Smith Mfg. Co., Inc.
1.5 Ac.

0.18 Ac. Olga Loos

14
Asa P. Hill, ux
0.8 Ac.

15
Kenneth Chorley
57.38 Ac.

16
10.5 Ac.

17
56.136 Ac.

9
John R. Moore, ux
52.97 Ac.

12
Johnson B. Moore, ux
36.664 Ac.

18
George E. Spruce
0.43 Ac.

19
2.74 Ac.

5
5 Ac.

LOT 39
8.775 Ac.

LOT 40
9.203 Ac.

6
Emma Grace Stryker
4 Ac.

7
4 Ac.

8
50.08 Ac. ±

11
16.3 Ac.

13
1.53 Ac.

14
0.8 Ac.

15
10.5 Ac.

16
10.5 Ac.

17
56.136 Ac.

18
0.43 Ac.

19
2.74 Ac.

20
1.6 Ac.

21
1.6 Ac.

22
1.6 Ac.

23
1.6 Ac.

24
1.6 Ac.

25
1.6 Ac.

26
1.6 Ac.

27
1.6 Ac.

28
1.6 Ac.

29
1.6 Ac.

30
1.6 Ac.

31
1.6 Ac.

32
1.6 Ac.

33
1.6 Ac.

34
1.6 Ac.

35
1.6 Ac.

36
1.6 Ac.

37
1.6 Ac.

38
1.6 Ac.

39
1.6 Ac.

40
1.6 Ac.

41
1.6 Ac.

42
1.6 Ac.

43
1.6 Ac.

44
1.6 Ac.

45
1.6 Ac.

46
1.6 Ac.

47
1.6 Ac.

48
1.6 Ac.

49
1.6 Ac.

50
1.6 Ac.

51
1.6 Ac.

52
1.6 Ac.

53
1.6 Ac.

54
1.6 Ac.

55
1.6 Ac.

56
1.6 Ac.

57
1.6 Ac.

58
1.6 Ac.

59
1.6 Ac.

60
1.6 Ac.

61
1.6 Ac.

62
1.6 Ac.

63
1.6 Ac.

64
1.6 Ac.

65
1.6 Ac.

66
1.6 Ac.

67
1.6 Ac.

68
1.6 Ac.

69
1.6 Ac.

70
1.6 Ac.

71
1.6 Ac.

72
1.6 Ac.

73
1.6 Ac.

74
1.6 Ac.

75
1.6 Ac.

76
1.6 Ac.

77
1.6 Ac.

78
1.6 Ac.

79
1.6 Ac.

80
1.6 Ac.

81
1.6 Ac.

82
1.6 Ac.

83
1.6 Ac.

84
1.6 Ac.

85
1.6 Ac.

86
1.6 Ac.

87
1.6 Ac.

88
1.6 Ac.

89
1.6 Ac.

90
1.6 Ac.

91
1.6 Ac.

92
1.6 Ac.

93
1.6 Ac.

94
1.6 Ac.

95
1.6 Ac.

96
1.6 Ac.

97
1.6 Ac.

98
1.6 Ac.

99
1.6 Ac.

100
1.6 Ac.